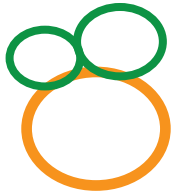


# HOW TO DRAW A MONKEY FACE

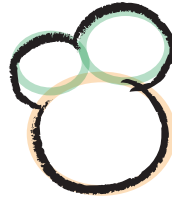
## WHAT YOU NEED:

- Paper
- A pencil, pen or marker
- Colored pencils, crayons, markers pastels or paint
- One of your parents to help you out



### STEP 1.

Lightly draw two circles sitting on top of an oval with an erasable pencil. It doesn't have to be perfect.



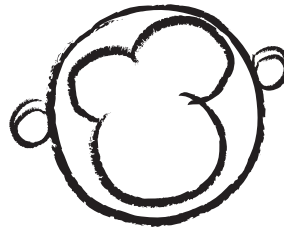
### STEP 2.

Press a little harder with your pencil and trace around the two circles sitting on top of an oval. Erase the lightly sketched lines.



### STEP 3.

Draw a larger circular shape around the two circles sitting on top of the oval. This will be the monkey's face.



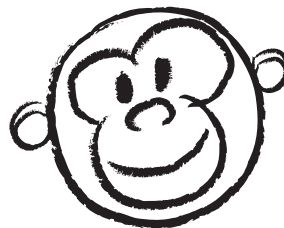
### STEP 4.

Draw two circle shapes, one attached to each side of the face. These are the monkey's ears.



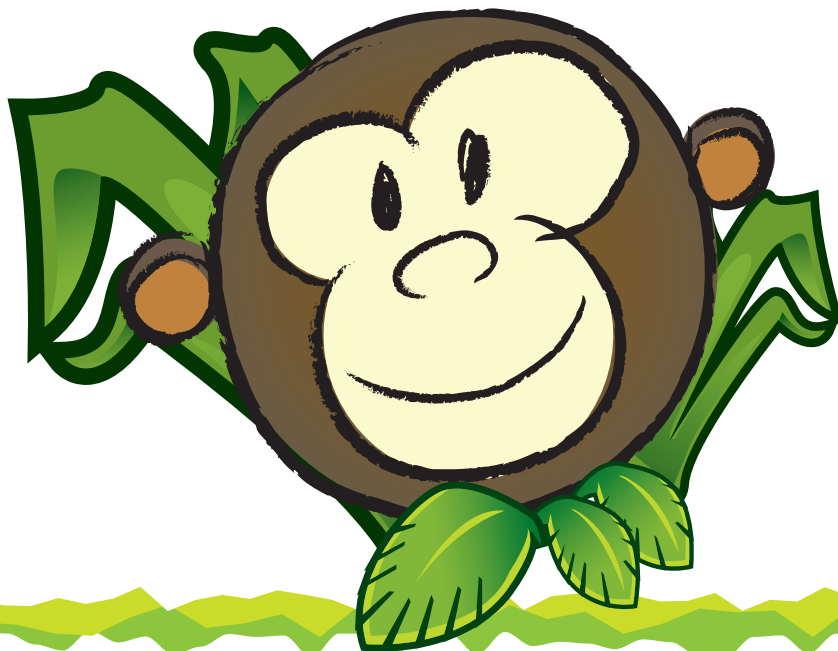
### STEP 5.

Draw a small oval in the center of the face. This is the monkey's nose.



### STEP 6.

Draw two small vertical lines slightly above the nose (like the number '11'). These are the monkey's eyes.



### STEP 7.

Fill in the monkey face with color. Add other interesting details to personalize your monkey.



[www.thecheesiest.com](http://www.thecheesiest.com)